



# Demographic and Income Comparison Profile

Giddings Texas  
 78942, Giddings, Texas  
 Rings: 5, 15, 30 mile radii

Latitude: 30.18163  
 Longitude: -96.93608

	5 miles	15 miles	30 miles
<b>Census 2010 Summary</b>			
Population	7,484	16,193	107,426
Households	2,479	6,105	40,611
Families	1,789	4,321	28,821
Average Household Size	2.81	2.57	2.57
Owner Occupied Housing Units	1,743	4,825	31,490
Renter Occupied Housing Units	736	1,280	9,121
Median Age	34.0	41.4	41.8
<b>2013 Summary</b>			
Population	7,573	16,206	108,451
Households	2,503	6,105	41,117
Families	1,801	4,308	29,083
Average Household Size	2.82	2.57	2.56
Owner Occupied Housing Units	1,735	4,773	31,538
Renter Occupied Housing Units	769	1,332	9,578
Median Age	34.1	41.8	42.4
Median Household Income	\$39,321	\$44,492	\$49,474
Average Household Income	\$55,269	\$59,440	\$64,379
<b>2018 Summary</b>			
Population	7,675	16,580	111,646
Households	2,545	6,268	42,455
Families	1,825	4,405	29,914
Average Household Size	2.81	2.56	2.56
Owner Occupied Housing Units	1,778	4,935	32,838
Renter Occupied Housing Units	767	1,333	9,617
Median Age	34.5	42.5	43.2
Median Household Income	\$44,512	\$52,005	\$57,458
Average Household Income	\$60,330	\$66,116	\$74,360
<b>Trends: 2013-2018 Annual Rate</b>			
Population	0.27%	0.46%	0.58%
Households	0.33%	0.53%	0.64%
Families	0.27%	0.45%	0.57%
Owner Households	0.49%	0.67%	0.81%
Median Household Income	2.51%	3.17%	3.04%

Source: U.S. Census Bureau, Census 2010 Summary File 1. Esri forecasts for 2013 and 2018.



# Demographic and Income Comparison Profile

Giddings Texas  
 78942, Giddings, Texas  
 Rings: 5, 15, 30 mile radii

Latitude: 30.18163  
 Longitude: -96.93608

2013 Households by Income	5 miles		15 miles		30 miles	
	Number	Percent	Number	Percent	Number	Percent
<\$15,000	388	15.5%	850	13.9%	5,501	13.4%
\$15,000 - \$24,999	357	14.3%	763	12.5%	4,512	11.0%
\$25,000 - \$34,999	371	14.8%	817	13.4%	4,596	11.2%
\$35,000 - \$49,999	376	15.0%	886	14.5%	6,108	14.9%
\$50,000 - \$74,999	382	15.3%	1,152	18.9%	8,062	19.6%
\$75,000 - \$99,999	305	12.2%	703	11.5%	5,381	13.1%
\$100,000 - \$149,999	212	8.5%	658	10.8%	4,928	12.0%
\$150,000 - \$199,000	81	3.2%	176	2.9%	1,007	2.4%
\$200,000+	32	1.3%	100	1.6%	1,021	2.5%
Median Household Income	\$39,321		\$44,492		\$49,474	
Average Household Income	\$55,269		\$59,440		\$64,379	
Per Capita Income	\$19,282		\$22,840		\$24,948	

2018 Households by Income	5 miles		15 miles		30 miles	
	Number	Percent	Number	Percent	Number	Percent
<\$15,000	377	14.8%	818	13.1%	5,148	12.1%
\$15,000 - \$24,999	324	12.7%	627	10.0%	3,423	8.1%
\$25,000 - \$34,999	263	10.3%	595	9.5%	3,575	8.4%
\$35,000 - \$49,999	436	17.1%	931	14.9%	5,763	13.6%
\$50,000 - \$74,999	420	16.5%	1,346	21.5%	8,476	20.0%
\$75,000 - \$99,999	355	13.9%	865	13.8%	7,230	17.0%
\$100,000 - \$149,999	233	9.2%	745	11.9%	6,128	14.4%
\$150,000 - \$199,000	102	4.0%	224	3.6%	1,473	3.5%
\$200,000+	36	1.4%	118	1.9%	1,239	2.9%
Median Household Income	\$44,512		\$52,005		\$57,458	
Average Household Income	\$60,330		\$66,116		\$74,360	
Per Capita Income	\$21,032		\$25,437		\$28,798	

**Data Note:** Income is expressed in current dollars.

**Source:** U.S. Census Bureau, Census 2010 Summary File 1. Esri forecasts for 2013 and 2018.



# Demographic and Income Comparison Profile

Giddings Texas  
 78942, Giddings, Texas  
 Rings: 5, 15, 30 mile radii

Latitude: 30.18163  
 Longitude: -96.93608

2010 Population by Age	5 miles		15 miles		30 miles	
	Number	Percent	Number	Percent	Number	Percent
Age 0 - 4	563	7.5%	997	6.2%	6,514	6.1%
Age 5 - 9	543	7.3%	1,021	6.3%	6,995	6.5%
Age 10 - 14	584	7.8%	1,137	7.0%	7,471	7.0%
Age 15 - 19	803	10.7%	1,338	8.3%	7,300	6.8%
Age 20 - 24	453	6.1%	794	4.9%	5,284	4.9%
Age 25 - 34	883	11.8%	1,675	10.3%	11,385	10.6%
Age 35 - 44	883	11.8%	1,841	11.4%	13,256	12.3%
Age 45 - 54	987	13.2%	2,507	15.5%	17,042	15.9%
Age 55 - 64	724	9.7%	2,138	13.2%	15,138	14.1%
Age 65 - 74	529	7.1%	1,473	9.1%	9,450	8.8%
Age 75 - 84	347	4.6%	909	5.6%	5,389	5.0%
Age 85+	185	2.5%	365	2.3%	2,201	2.0%

2013 Population by Age	5 miles		15 miles		30 miles	
	Number	Percent	Number	Percent	Number	Percent
Age 0 - 4	557	7.4%	973	6.0%	6,383	5.9%
Age 5 - 9	542	7.2%	997	6.2%	6,769	6.2%
Age 10 - 14	561	7.4%	1,067	6.6%	7,193	6.6%
Age 15 - 19	806	10.6%	1,296	8.0%	6,972	6.4%
Age 20 - 24	508	6.7%	894	5.5%	5,936	5.5%
Age 25 - 34	893	11.8%	1,707	10.5%	11,752	10.8%
Age 35 - 44	866	11.4%	1,753	10.8%	12,715	11.7%
Age 45 - 54	951	12.6%	2,336	14.4%	16,069	14.8%
Age 55 - 64	818	10.8%	2,333	14.4%	16,223	15.0%
Age 65 - 74	542	7.2%	1,588	9.8%	10,637	9.8%
Age 75 - 84	335	4.4%	873	5.4%	5,497	5.1%
Age 85+	193	2.5%	386	2.4%	2,304	2.1%

2018 Population by Age	5 miles		15 miles		30 miles	
	Number	Percent	Number	Percent	Number	Percent
Age 0 - 4	567	7.4%	991	6.0%	6,561	5.9%
Age 5 - 9	532	6.9%	983	5.9%	6,641	5.9%
Age 10 - 14	555	7.2%	1,054	6.4%	7,097	6.4%
Age 15 - 19	789	10.3%	1,258	7.6%	6,867	6.2%
Age 20 - 24	506	6.6%	876	5.3%	5,702	5.1%
Age 25 - 34	930	12.1%	1,771	10.7%	12,643	11.3%
Age 35 - 44	860	11.2%	1,784	10.8%	12,594	11.3%
Age 45 - 54	871	11.4%	2,075	12.5%	14,696	13.2%
Age 55 - 64	862	11.2%	2,518	15.2%	17,028	15.3%
Age 65 - 74	647	8.4%	1,940	11.7%	13,274	11.9%
Age 75 - 84	358	4.7%	931	5.6%	6,117	5.5%
Age 85+	196	2.6%	399	2.4%	2,427	2.2%

Source: U.S. Census Bureau, Census 2010 Summary File 1. Esri forecasts for 2013 and 2018.



# Demographic and Income Comparison Profile

Giddings Texas  
 78942, Giddings, Texas  
 Rings: 5, 15, 30 mile radii

Latitude: 30.18163  
 Longitude: -96.93608

2010 Race and Ethnicity	5 miles		15 miles		30 miles	
	Number	Percent	Number	Percent	Number	Percent
White Alone	5,428	72.5%	12,766	78.8%	84,876	79.0%
Black Alone	864	11.5%	1,656	10.2%	9,346	8.7%
American Indian Alone	67	0.9%	106	0.7%	784	0.7%
Asian Alone	44	0.6%	64	0.4%	550	0.5%
Pacific Islander Alone	6	0.1%	8	0.0%	81	0.1%
Some Other Race Alone	912	12.2%	1,284	7.9%	9,436	8.8%
Two or More Races	163	2.2%	310	1.9%	2,352	2.2%
Hispanic Origin (Any Race)	2,716	36.3%	3,843	23.7%	24,138	22.5%

2013 Race and Ethnicity	5 miles		15 miles		30 miles	
	Number	Percent	Number	Percent	Number	Percent
White Alone	5,423	71.6%	12,618	77.9%	84,640	78.0%
Black Alone	862	11.4%	1,679	10.4%	9,490	8.8%
American Indian Alone	67	0.9%	107	0.7%	814	0.8%
Asian Alone	77	1.0%	101	0.6%	748	0.7%
Pacific Islander Alone	6	0.1%	8	0.0%	96	0.1%
Some Other Race Alone	964	12.7%	1,363	8.4%	10,127	9.3%
Two or More Races	174	2.3%	329	2.0%	2,535	2.3%
Hispanic Origin (Any Race)	2,856	37.7%	4,056	25.0%	25,880	23.9%

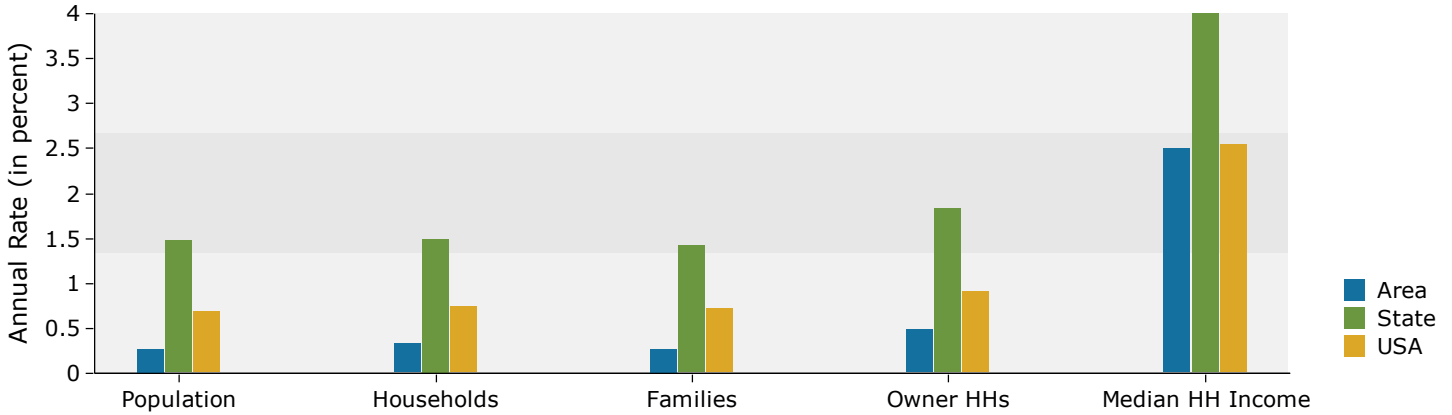
  

2018 Race and Ethnicity	5 miles		15 miles		30 miles	
	Number	Percent	Number	Percent	Number	Percent
White Alone	5,423	70.6%	12,746	76.9%	85,265	76.4%
Black Alone	840	10.9%	1,689	10.2%	9,589	8.6%
American Indian Alone	70	0.9%	116	0.7%	912	0.8%
Asian Alone	147	1.9%	183	1.1%	1,135	1.0%
Pacific Islander Alone	7	0.1%	10	0.1%	118	0.1%
Some Other Race Alone	1,000	13.0%	1,467	8.8%	11,717	10.5%
Two or More Races	189	2.5%	369	2.2%	2,910	2.6%
Hispanic Origin (Any Race)	3,079	40.1%	4,508	27.2%	29,848	26.7%

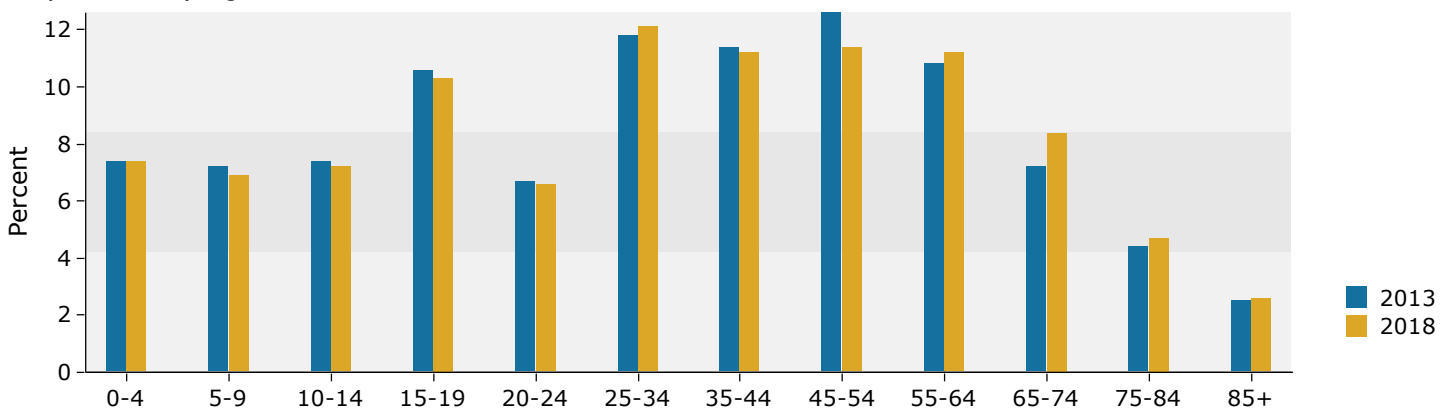
Source: U.S. Census Bureau, Census 2010 Summary File 1. Esri forecasts for 2013 and 2018.

## 5 miles

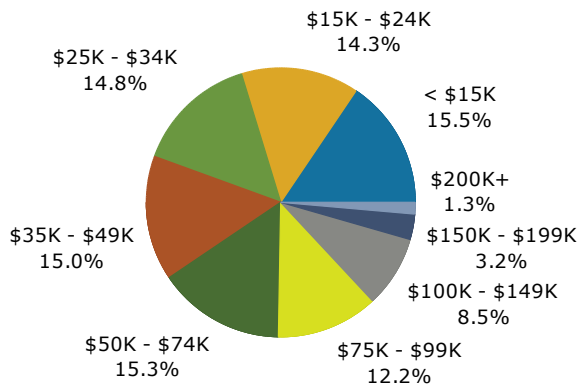
### Trends 2013-2018



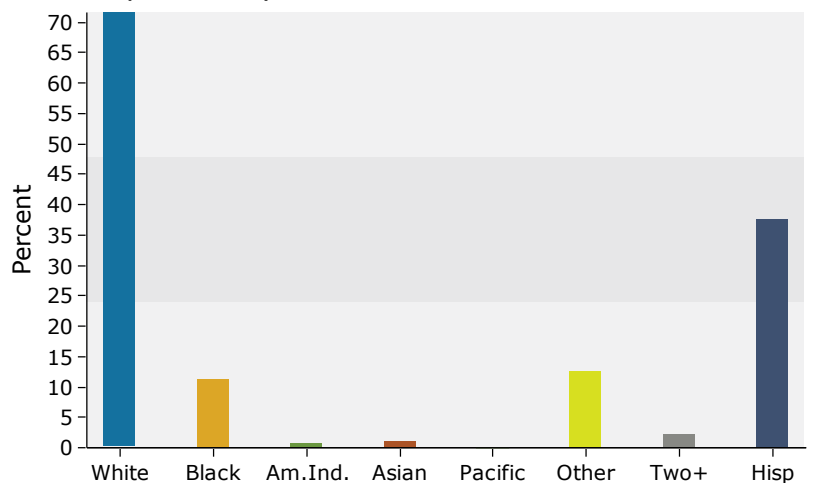
### Population by Age



### 2013 Household Income



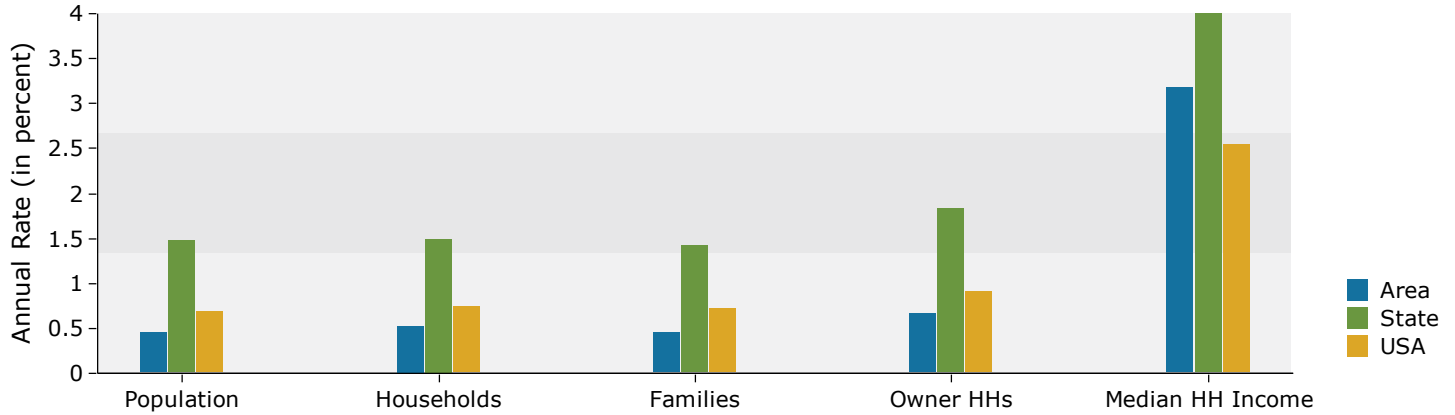
### 2013 Population by Race



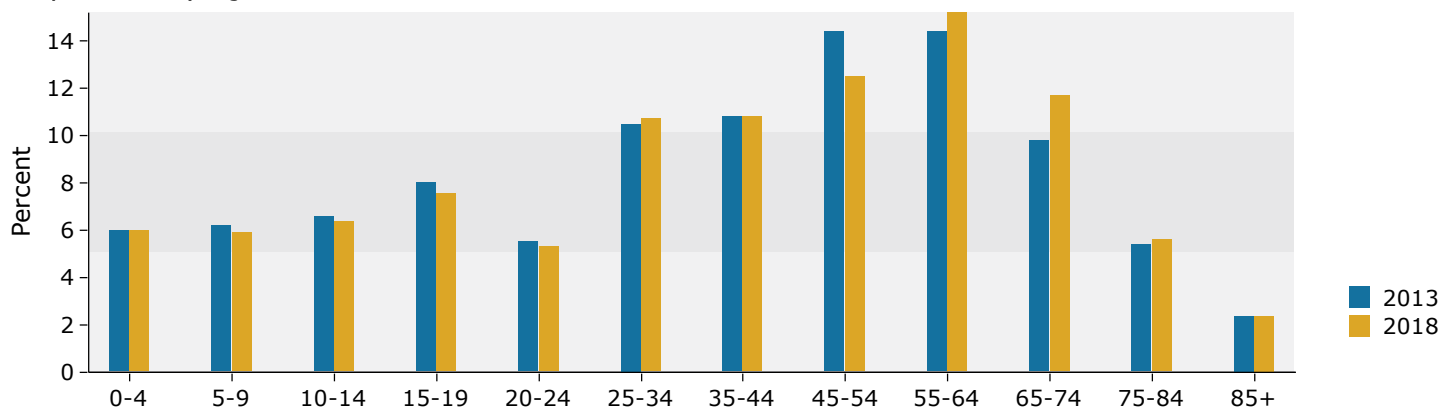
Source: U.S. Census Bureau, Census 2010 Summary File 1. Esri forecasts for 2013 and 2018.

## 15 miles

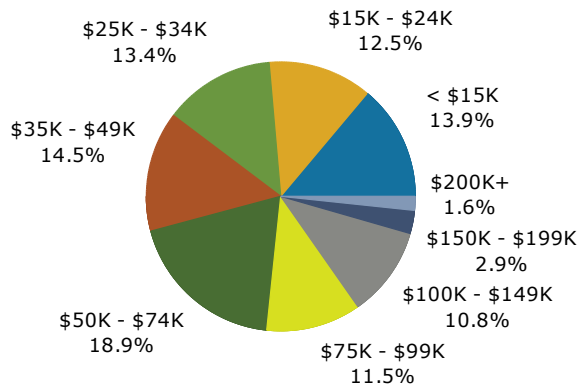
### Trends 2013-2018



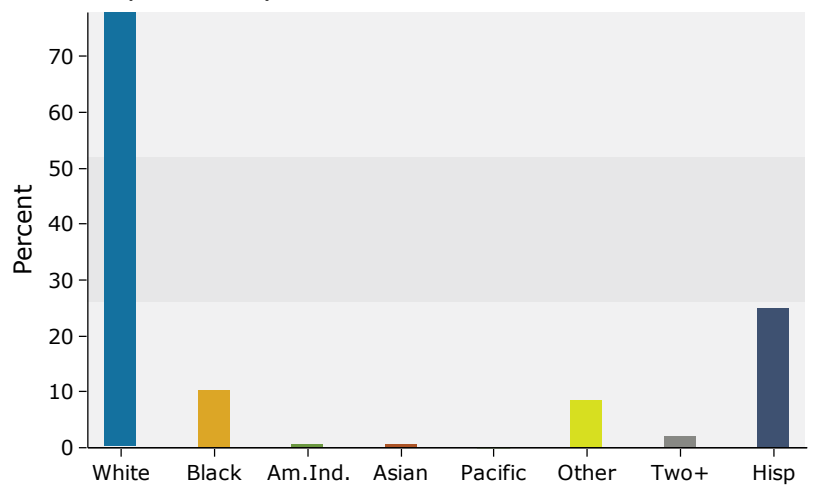
### Population by Age



### 2013 Household Income

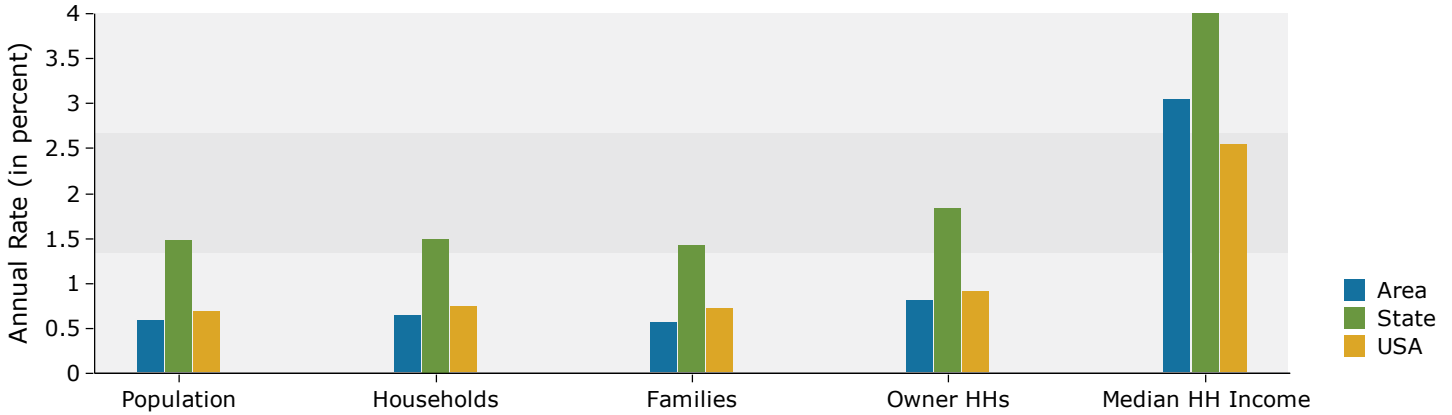


### 2013 Population by Race

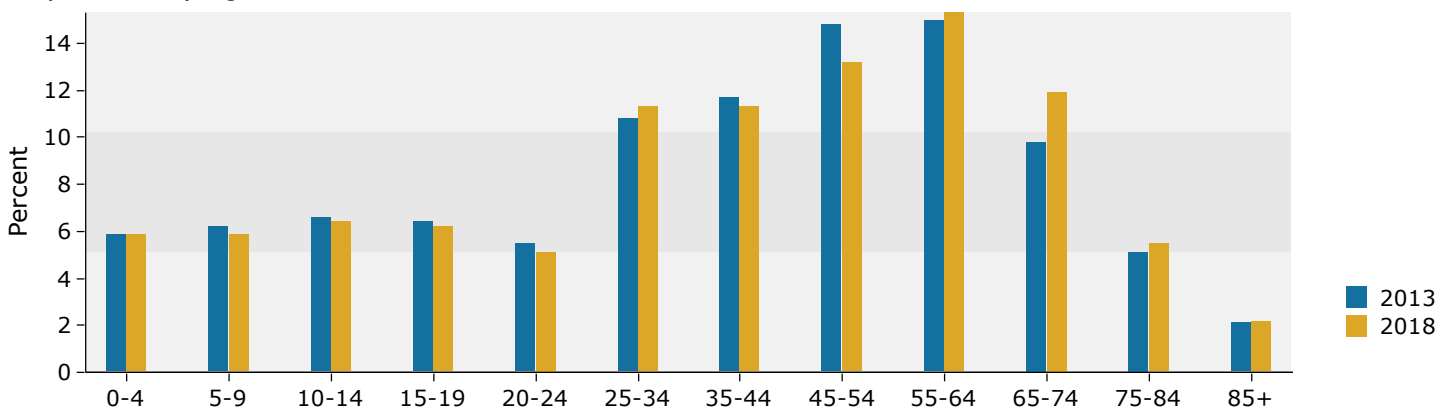


## 30 miles

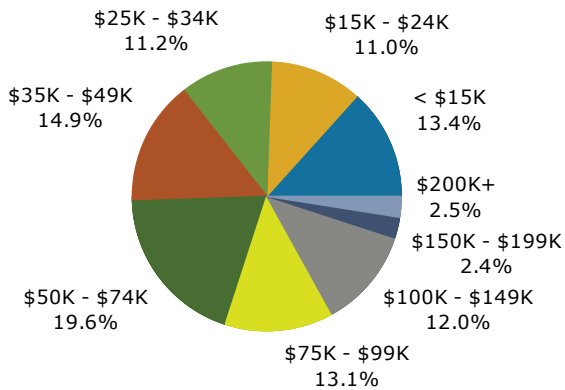
### Trends 2013-2018



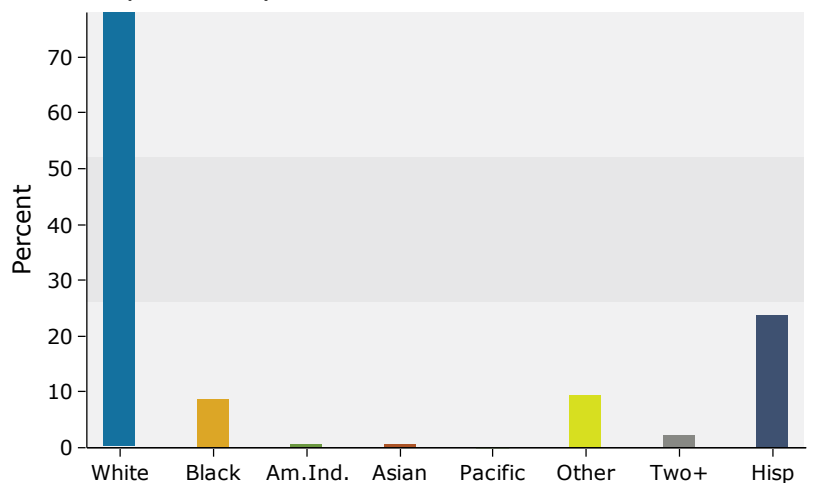
### Population by Age



### 2013 Household Income



### 2013 Population by Race



Source: U.S. Census Bureau, Census 2010 Summary File 1. Esri forecasts for 2013 and 2018.